

PART OF SECTION 10, T.6N., R.1E., S.L.B. & M.  
**SPURLOCK SUBDIVISION PLAT 1**

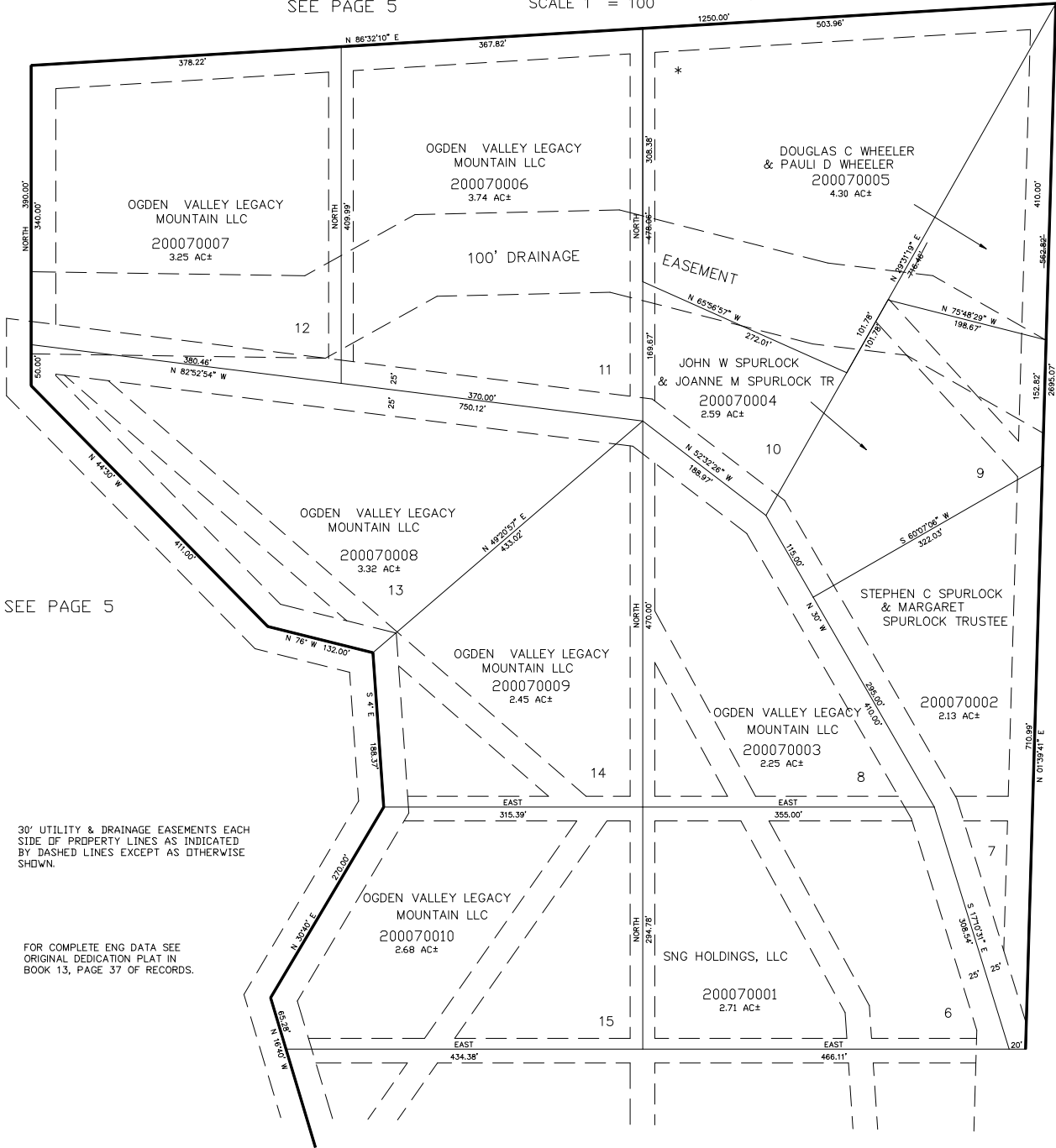
**PLAT 1**

TAXING UNIT: 28

LOTS 6 - 15  
 IN WEBER COUNTY  
 SCALE 1" = 100'

\* UTILITY EASEMENT ON LOT 10  
 VACATED 14-OCT-1998  
 BK 1962 PG 2724 E#1581019

SEE PAGE 5



SEE PAGE 5

SEE PAGE 46

30' UTILITY & DRAINAGE EASEMENTS EACH SIDE OF PROPERTY LINES AS INDICATED BY DASHED LINES EXCEPT AS OTHERWISE SHOWN.

FOR COMPLETE ENG DATA SEE ORIGINAL DEDICATION PLAT IN BOOK 13, PAGE 37 OF RECORDS.

SEE PAGE 6